

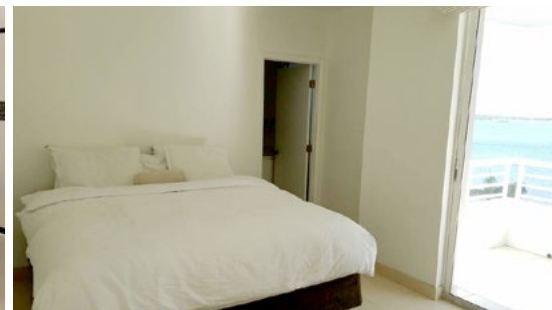
FOR SALE


PARK LANE
REALTY™

BRICKELL

1402 BRICKELL BAY DRIVE, UNIT 803 | MIAMI, FL 33131

2 Bedrooms | 2 Baths | 1,040 Sq. Ft.



COMMODORE BAY CONDO ON BRICKELL

Beautiful apartment located in the heart of Brickell. Incredibly bright corner unit, 2 bedroom / 2 bathroom condo is in a boutique building, with an open floor plan offering bay views on an oversized wrap-around balcony. Totally remodeled unit from kitchen, to bathroom to closets. Marble floor throughout and much more. Building amenities include pool, Jacuzzi, BBQ area and a gym.

Watch the sun rise and the sun set. The perfect place to call home.

PRICE: \$425,000



ERIKA HOFFMANN
General Manager & Realtor®

ehoffmann@parklanere.com
Call: (305) 343 5279



Park Lane Realty is a first-class real estate group based in South Florida that provides the exclusive, superior service that one expects when selling, purchasing, or renting a luxury property. Park Lane Realty delivers a premium level of service to discerning clientele.

DELIVERING THE EXTRAORDINARY

(305) 504 2791 | info@parklanere.com
www.parklanere.com



©2017 PARK LANE REALTY. ALL RIGHTS RESERVED. AN EQUAL HOUSING OPPORTUNITY COMPANY. IT IS NOT OUR INTENTION TO SOLICIT CURRENTLY LISTED PROPERTIES.